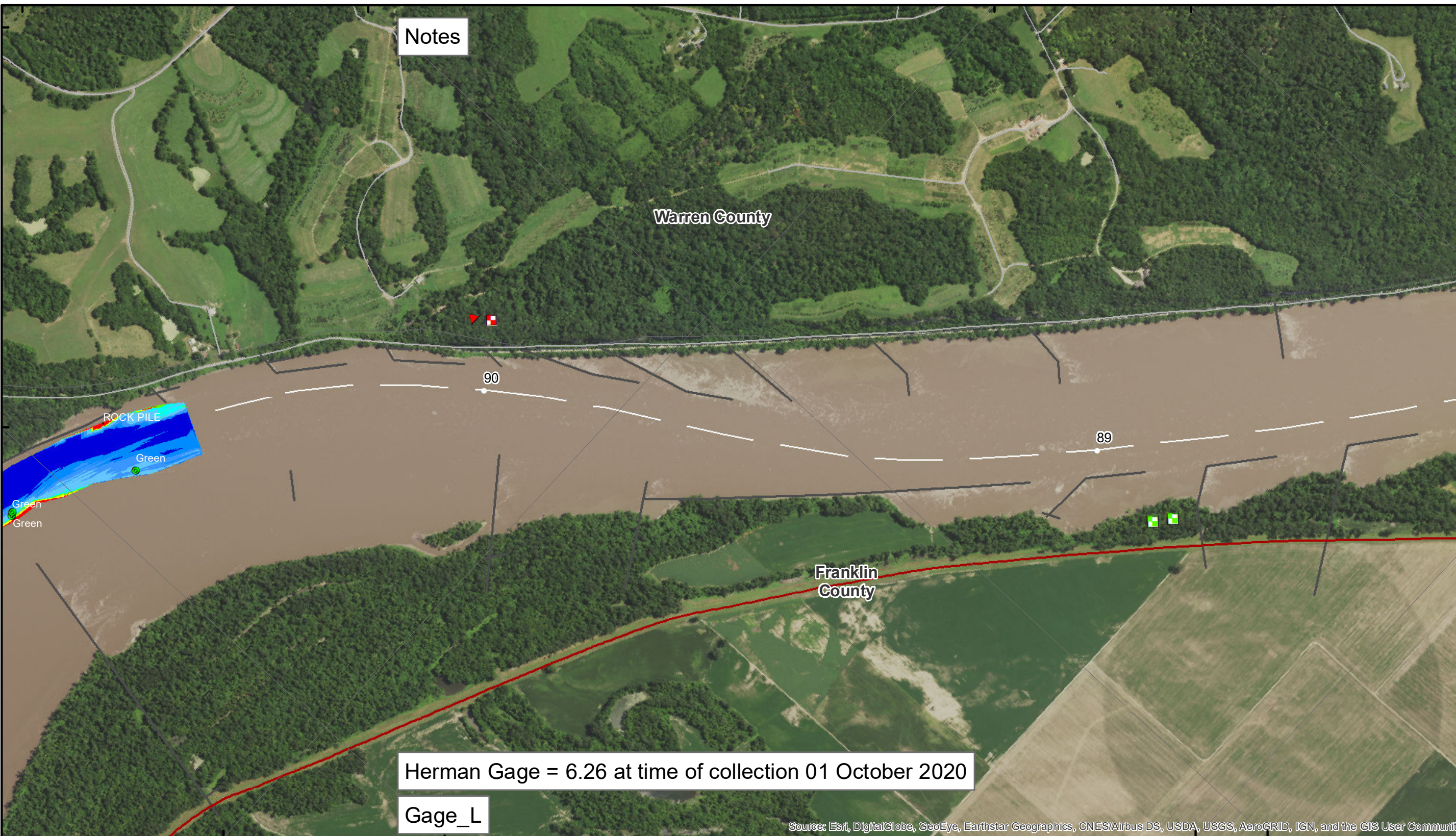


38°43'N 91°18'W 38°41'N 91°17'W



Notes

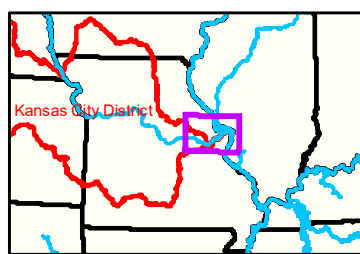
Warren County

Franklin County

Herman Gage = 6.26 at time of collection 01 October 2020

Gage\_L

Source: Esri, DigitalGlobe, GeoEye, Earthstar Geographics, CNES/Airbus DS, USDA, USGS, AeroGRID, IGN, and the GIS User Community



**LEGEND**

	< 8		< 8 ft		Green Passing		Green		Green CAN
	8 - 9		8 - 9 ft		Red Passing		Red		Red NUN
	9 - 9.5		9 - 10 ft		Green Crossing		Red		
	9.5 - 10		10 - 12 ft		Red Crossing		Green		
	10 - 12		River Mile				Red		
	12 - 14		Sailing Line				Green		
	14 - 16		BSNP Structure				Red		
	> 16		Levee				Green		

**Buoy**

	Green		Green CAN
	Red		Red NUN

**Junction**

	Green
	Red

0 312.5 625 937.5 1,250 2,500 Feet

**NOTES:**  
 Horizontal Coordinate System:  
 World Geodetic System of 1984 (WGS84), projected to the  
 Universal Transverse Mercator (UTM) Zone 15 North.  
 Distance units in U.S. Survey Feet

Vertical Datum:  
 Soundings are shown in feet and indicated depths  
 are referenced to water surface at time of collection.

The information depicted on this map represents the results of a survey  
 conducted on the date indicated and can only be considered  
 to represent the general condition existing at that time.

The location of navigation aids are based on and provided by  
 the U.S. Coast Guard.



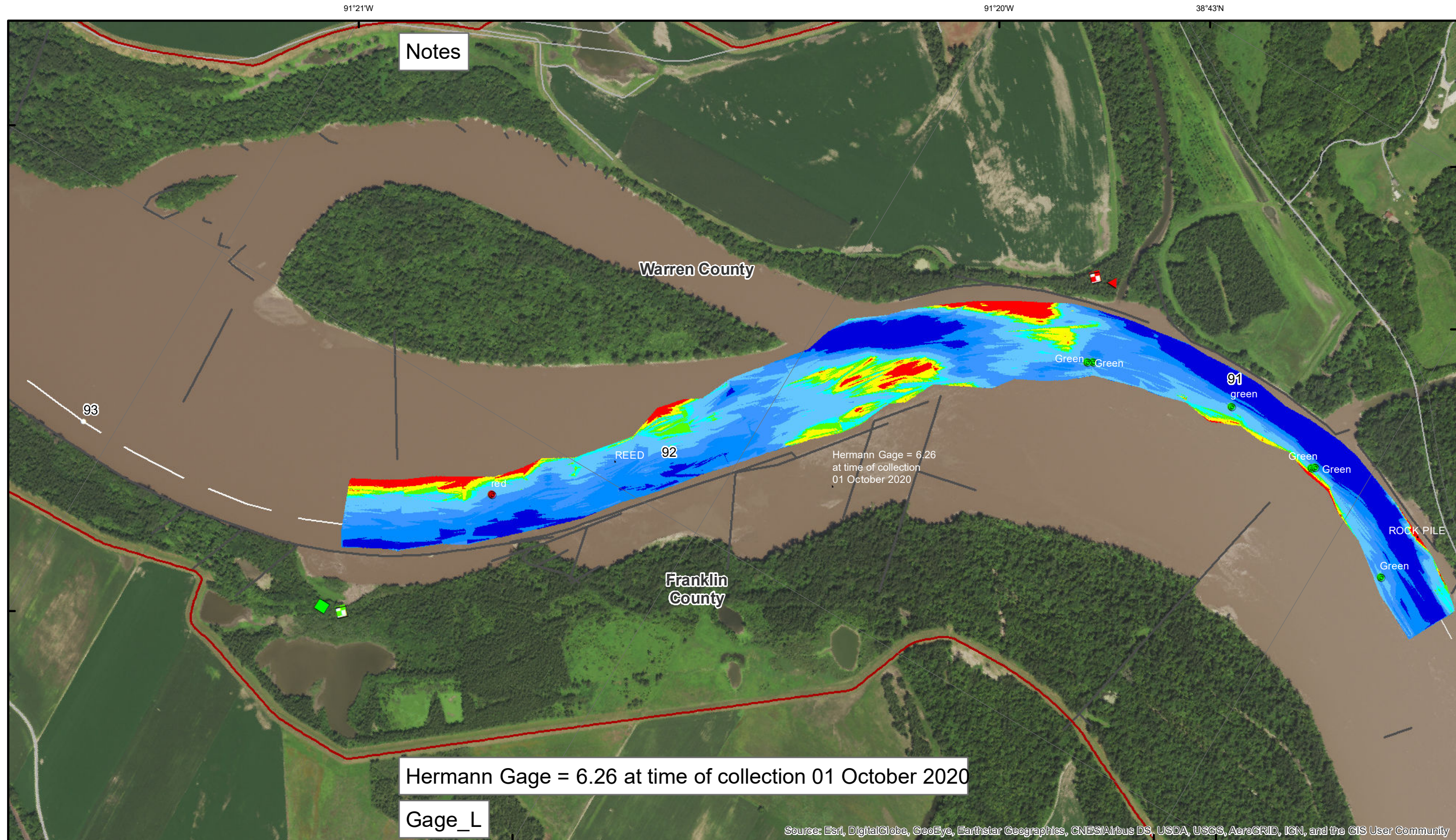
**DISCLAIMER:** The U.S. Army Corps of Engineers (USACE) provides this information as a service to the public. It is not intended to be used for any purpose other than that for which it was provided. The USACE makes no warranty, express or implied, regarding the accuracy, reliability, or completeness of the information. The user assumes all liability for any use of the information. The USACE is not responsible for any damage or loss resulting from the use of this information. The USACE is not responsible for any damage or loss resulting from the use of this information.

KANSAS CITY DISTRICT MISSOURI RIVER AREA OFFICE	
Submitted By:	MRAO
Reviewed By:	MRAO
Approved By:	MRAO

**Survey Information**

MO\_01\_LMR  
 MO\_01\_LMR\_20201001\_CS\_90\_5\_92\_5\_SORT  
 01 October 2020

**Sheet Number**  
 41 of 46



Notes

Hermann Gage = 6.26 at time of collection 01 October 2020

Gage\_L

Hermann Gage = 6.26 at time of collection 01 October 2020

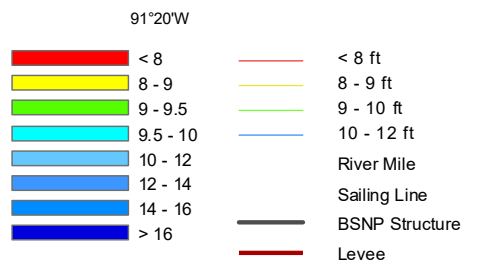
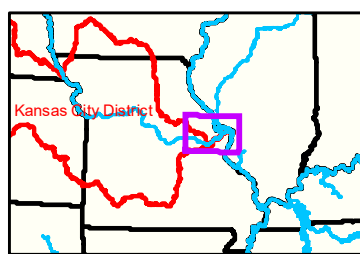
Source: Esri, DigitalGlobe, GeoEye, Earthstar Geographics, CNES/Airbus DS, USDA, USGS, AeroGRID, IGN, and the GIS User Community



**DISCLAIMER:** The U.S. Army Corps of Engineers provides this information as a service to the public. It is not intended to be used for any purpose other than that for which it was provided. The Corps makes no warranty, express or implied, regarding the accuracy, reliability, or completeness of the information. The user assumes all liability for any use of this information. The U.S. Army Corps of Engineers is not responsible for any damage or loss resulting from the use of this information. The information is provided as a service to the public and is not intended to be used for any purpose other than that for which it was provided.

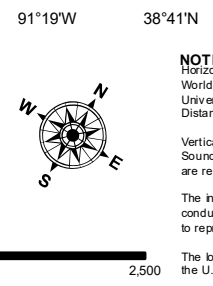
KANSAS CITY DISTRICT MISSOURI RIVER AREA OFFICE	
Submitted By:	MRAO
Reviewed By:	MRAO
Checked By:	MRAO

**Survey Information**  
 MO\_01\_LMR  
 MO\_01\_LMR\_20201001\_CS\_90\_5\_92\_5\_SORT  
 01 October 2020



- LEGEND**
- Green Passing
  - ▲ Red Passing
  - ◆ Green Crossing
  - ◆ Red Crossing

- Green Buoy
- Red Buoy
- Green CAN
- Red NUN



**NOTES:**  
 Horizontal Coordinate System:  
 World Geodetic System of 1984 (WGS84), projected to the Universal Transverse Mercator (UTM) Zone 15 North.  
 Distance units in U.S. Survey Feet  
 Vertical Datum:  
 Soundings are shown in feet and indicated depths are referenced to water surface at time of collection.  
 The information depicted on this map represents the results of a survey conducted on the date indicated and can only be considered to represent the general condition existing at that time.  
 The location of navigation aids are based on and provided by the U.S. Coast Guard.

**Sheet Number**  
 42 of 46